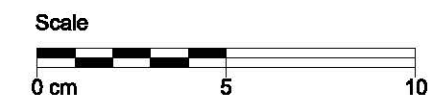


- 04 RHEINZINK-Angled Standing Seam Facade,
- 16 RHEINZINK-Building Profile
 - c Perforated strip
 - f Base trim
 - l Cornice coping
- 18 Support Profile
 - a Galvanised steel
- 19 Separating Layer
 - d Breather membrane
- 20 Substructure
 - h WBP plywood or OSB Grade 3
Min. 18mm thick
- 21 Batten/ Squared Timber
 - Batten
 - Squared Timber
- 23 Supporting Structure
- 25 Thermal insulation
- 30 Ventilated Air Space



RHEINZINK®		
STANDARD DETAIL		
Base point	Title	Scale
+cornice coping		1:2
+ventilation over cornice		A3
0903030301012000006_GB_en	Detail-Nr.	Drawn
	Date	gam
		18.05.12
<p>The detail describes an optional design in standard cases based on a European climate. Any user of this document is responsible to verify the feasibility of the solution with respect to the specific local situation and conditions. Using the documents provided by RHEINZINK is a service, which excludes liability for damages or claims of any kind. Contingent liability for malice or gross negligence is unaffected.</p>		