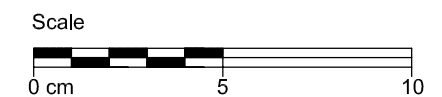


- 8 RHEINZINK-Tile Facade
 - a Standard tile
 - b Adaptor tile
- 16 RHEINZINK-Building Profile
 - e Receiver strip, with sealant tape
 - f Base trim, partly perforated
- 20 Substructure
 - e Softwood boarding, min. 24 mm x max. 160 mm
- 21 Batten/ Squared Timber
 - Batten
 - Squared timber
- 23 Supporting Structure
- 25 Thermal Insulation
- 30 Ventilated Air Space



RHEINZINK®		
STANDARD DETAIL		
Base Point + Ventilation inlet -	Title	Scale 1:2
		Size A3
09030600010120000001_GB_en	Detail-Nr. GB_en	Drawn gam
		Date 20.02.14
The detail describes an optional design in standard cases based on a European climate. Any user of this document is responsible to verify the feasibility of the solution with respect to the specific local situation and conditions. Using the documents provided by RHEINZINK is a service, which excludes liability for damages or claims of any kind. Contingent liability for malice or gross negligence is unaffected.		